

Power Supply 12V 200W - 19,7A - SLIM - Aluminium IP20



Product code:

Reference: 9107

Technical specifications:

REFERENCE: 9107
Rated Power : 200w
Nominal Voltage: 85V-265V
Construction Material: Aluminium
Certifications: CE - ROHS
IP : IP20
Diode Life Expectancy (H): 30.000
Dimensions (mm): 224x70x39
Frequency (Hz): 50/60Hz
Temperature Range (°C): -20°C ~ +55°C
On/Off Cycles: 100.000
Energy Rating (2021-UE-2019/2015): A
Warranty Years: 2

Product short description:

This 200W to 12-volt SLIM Transformer is the perfect solution for efficiently converting alternating current to direct current. With a slim design and an IP20 rating, it's ideal for indoor use. It reliably and effectively converts power, providing the necessary power to run a variety of devices and applications.

Product description:

Power supply 12V 200W Aluminium

This 200W to 12-volt SLIM Transformer is the perfect solution for efficiently converting alternating current to direct current. With a slim design and an IP20 rating, it's ideal for indoor use. It reliably and effectively converts power, providing the necessary power to run a variety of devices and applications.

Its aluminum casing makes it a product resistant to shocks while lightweight.

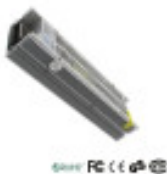
This product is CE and ROHS certified to ensure product quality.

Usages

Although their uses are diverse, where they are most often used is in the installation of lighting systems consisting of LED strips.

At FactorLED we ensure that our products have a QUALITY guarantee and offer all the necessary elements for DISTRIBUTION, IMPORT or WHOLESale, including the technical data sheet of each LED product.

Additional images:



Technical Datasheet

