

## Garden Spike for GU10 Lamp - IP65



### Product code:

Reference: 14400

### Technical specifications:

REFERENCE: 14000  
Construction Material: Aluminium+Glass  
Base: GU10  
Certifications: CE - ROHS  
IP : IP65-Outdoor  
Dimensions (mm): 98\*95mm  
Warranty Years: 2

### Product short description:

With our **IP65 Garden Spike** you can decorate and illuminate your garden and give it an elegant touch. It has a **GU10** socket type. Thanks to the **IP65 protection** you can enjoy its durability in your garden.

### Product description:

Garden Spike for GU10 Lamp - IP65

With our **Garden Spike IP65**, you can decorate and illuminate different places giving it an elegant touch.

This spotlight is made of cast **aluminium** and covered with a paint that protects it from oxidation.

It has a membrane that is located between the glass and the metallic closure, preventing humidity from entering the bulb, making the inside of the spotlight very well insulated against humidity. It is also covered by glass lenses, which resist rain and snow. It has an **IP65 protection** rating, which greatly improves the stability of the outdoor lighting and its long-term use.

It has a **GU10** socket type.

Its movable joints allow it to be oriented anywhere and are robust enough so that it does not move once it has been adjusted into position.

Installation is easy as you simply insert the bracket into the floor in the right position.

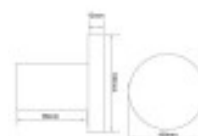
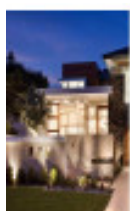
Thanks to LED technology you can save up to 80% on your electricity bill.

Uses of the Garden Spike for GU10 Lamp - IP65

- corridors
- Gardens
- patios
- Fences
- driveways

At FactorLED we ensure that our products have a **QUALITY** guarantee and offer all the necessary elements for **DISTRIBUTION**, **IMPORT** or **WHOLESALE**, including the technical data sheet of each LED product.

### Additional images:



# Technical Datasheet

---

